

ΕΞΑΤΜΙΣΕΙΣ ΚΑΤΑΛΥΤΕΣ DPF

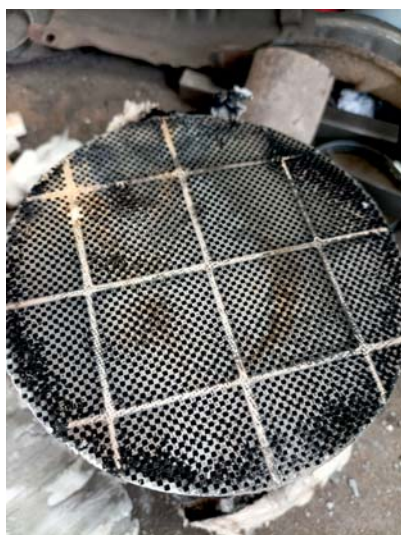


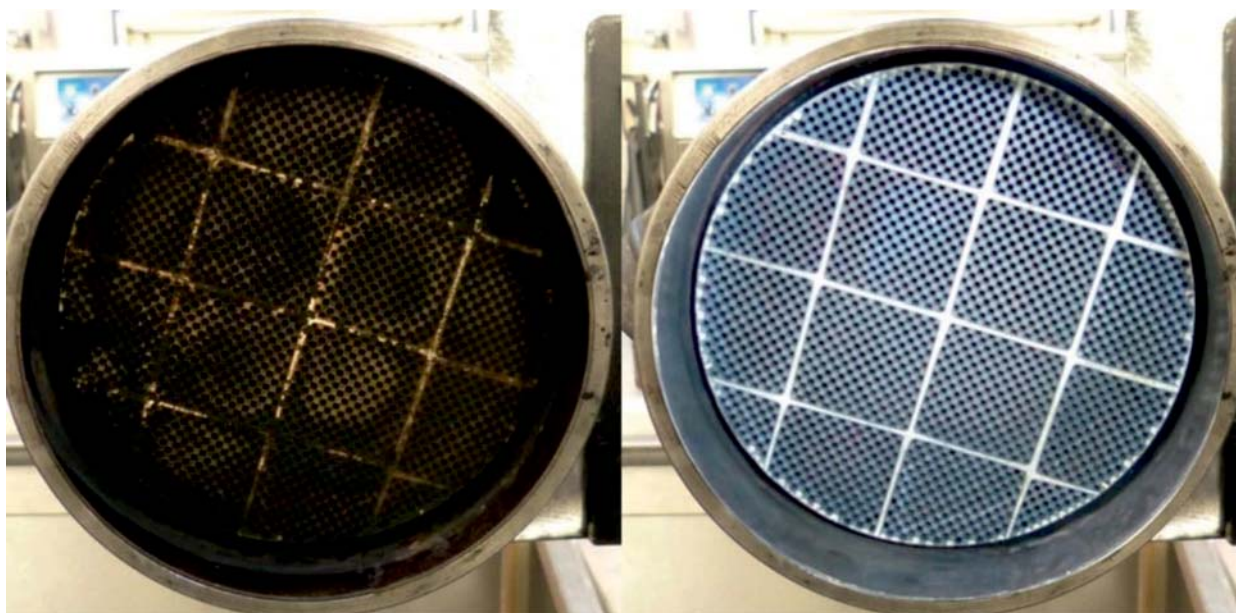
ΠΑΡΑΣΚΕΥΟΠΟΥΛΟΣ

☎ 2310.555959









ΠΡΙΝ

ΜΕΤΑ

ΚΕΡΑΜΙΚΟΙ ΜΟΝΟΛΙΘΟΙ



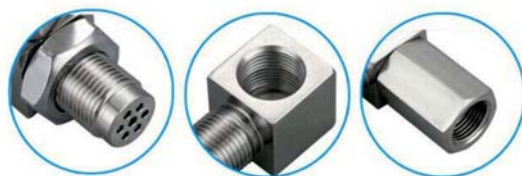
ΜΕΤΑΛΛΙΚΟΙ
ΜΟΝΟΛΙΘΟΙ











The logo for WALKER, featuring the word "WALKER" in a bold, black, sans-serif font. The letters are set against a background of two thick, horizontal yellow bars, one above and one below the text.The logo for PEBSSA, consisting of the word "PEBSSA" in a blue, sans-serif font inside a white rectangular box with a blue border. The box is centered over a red circle, and a registered trademark symbol (®) is located to the right of the box.The logo for KRAFT KATALYSATOR, with "KRAFT" in a large, blue, sans-serif font and "KATALYSATOR" in a smaller, blue, sans-serif font below it.The logo for ASSO, featuring a yellow stylized four-pointed star or flower icon to the left of the word "ASSO" in a bold, yellow, sans-serif font.The logo for BM CATALYSTS, with "BM" in a large, blue, sans-serif font and "CATALYSTS" in a smaller, blue, sans-serif font below it.The logo for DINEX, with "DINEX" in a blue, italicized, sans-serif font, set against a background of two thick, horizontal blue bars.The logo for FISCHER AUTOMOTIVE, featuring the letters "FA" in a large, blue, sans-serif font, with the letter "A" in orange. Below the letters, the words "FISCHER AUTOMOTIVE" are written in a smaller, blue, sans-serif font.

ΠΑΡΑΣΚΕΥΟΠΟΥΛΟΣ

ΑΝΤΑΛΛΑΚΤΙΚΑ ΑΥΤΟΚΙΝΗΤΩΝ ΜΟΝ.ΙΚΕ

ΑΝΑΤΟΛΙΚΗΣ ΘΡΑΚΗΣ 18

57009, ΚΑΛΟΧΩΡΙ, ΘΕΣΣΑΛΟΝΙΚΗ

ΤΗΛ.: 2310.555959, 2310.471103

Κινητό & Viber: 6951 679071

Email: esales.parask@gmail.com